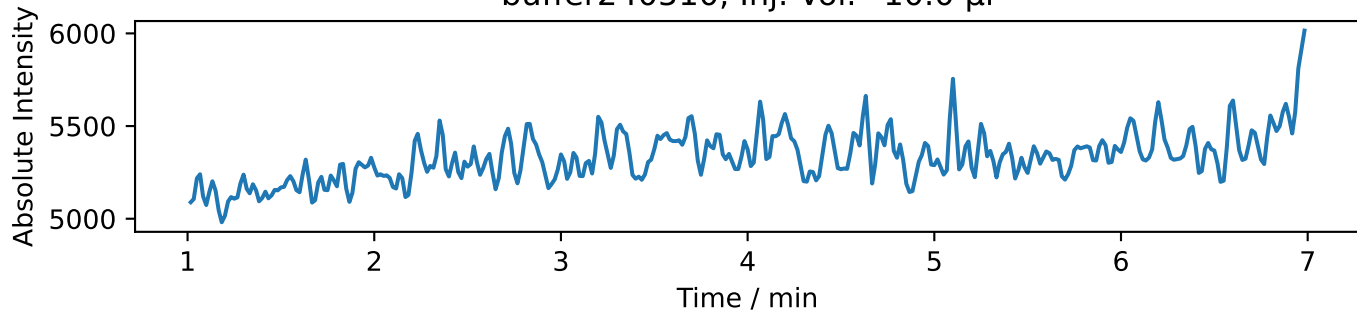
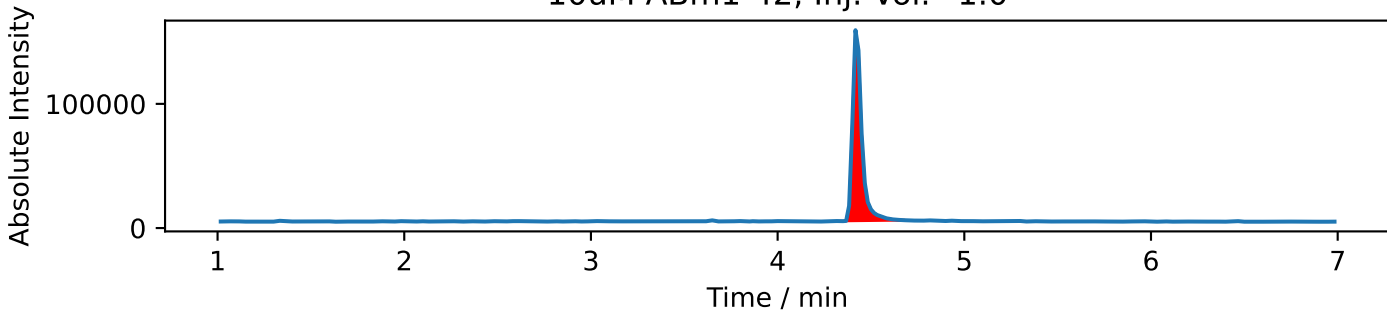


# Peak integrations for control samples - MS

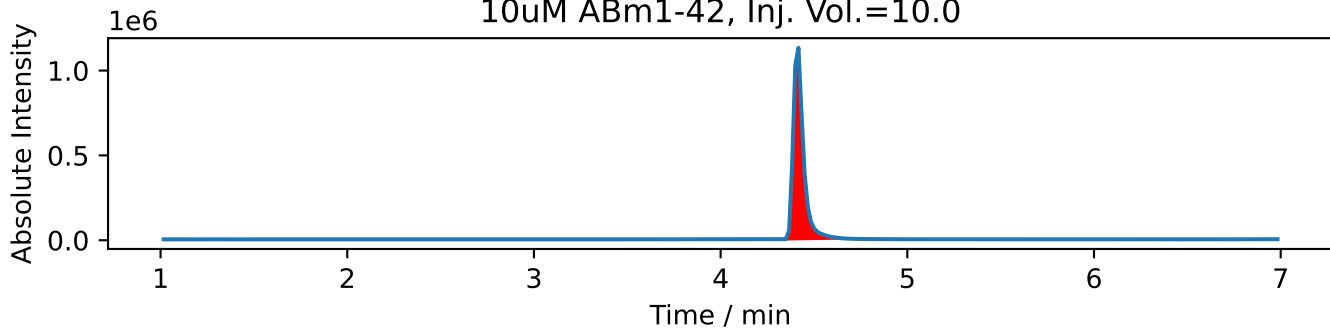
buffer240510, Inj. Vol.=10.0  $\mu$ l



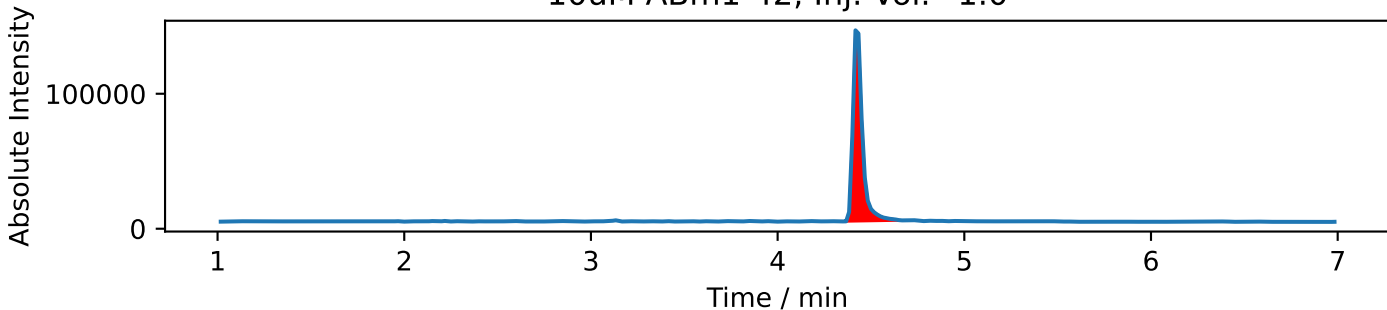
10uM ABm1-42, Inj. Vol.=1.0



10uM ABm1-42, Inj. Vol.=10.0



10uM ABm1-42, Inj. Vol.=1.0



10uM ABm1-42, Inj. Vol.=1.0

